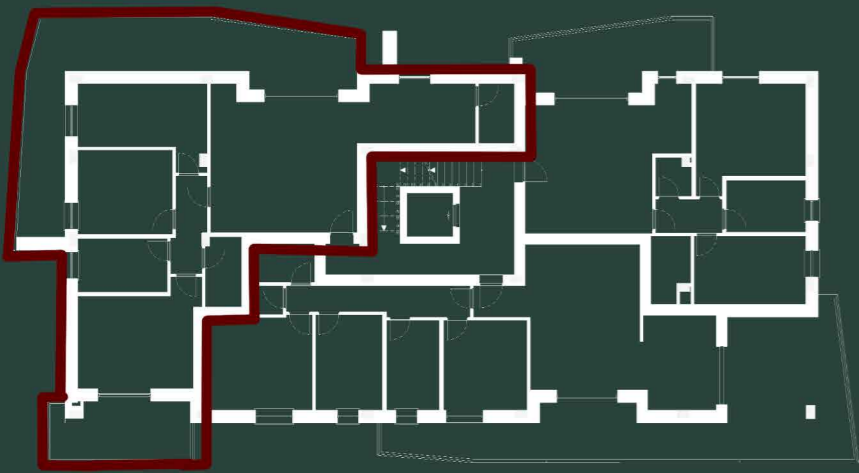
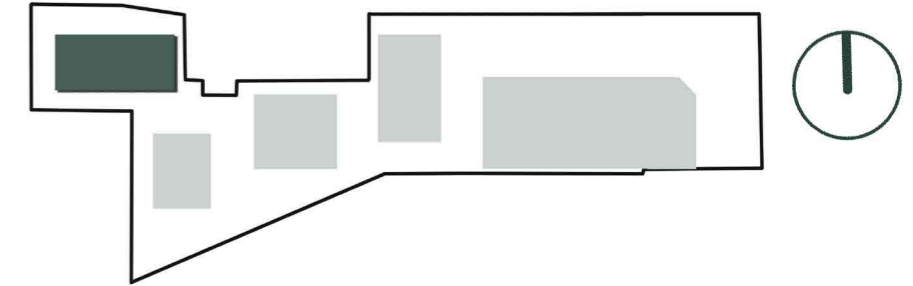


RESIDENZIALE MORANE



KEYPLAN



EDIFICIO D

APPARTAMENTO

D07

PIANO TERZO



MQ	PIANO	MQ	%	Sup. Commerciali
Appartamento 07	Terzo	124,73	100%	124,73
Balcone	Terzo	34,9	50%	17,45
Balcone	Terzo	12,27	50%	6,14
Totale				148,32