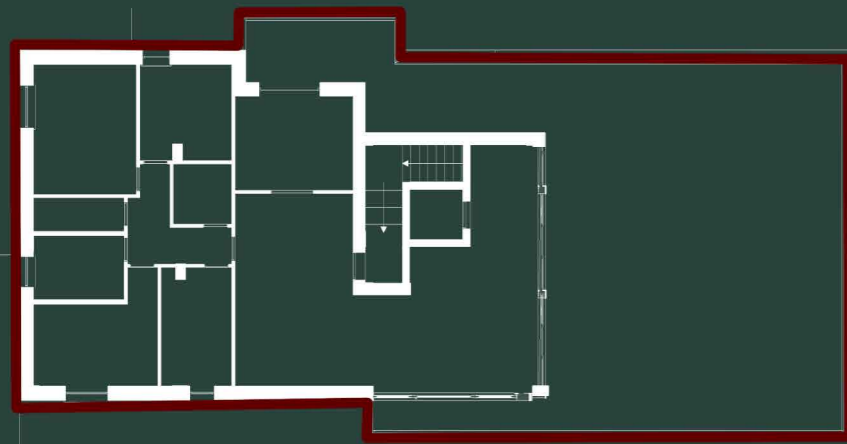
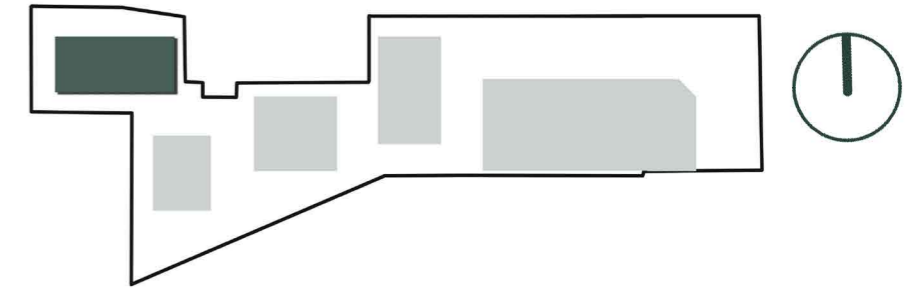


# RESIDENZIALE MORANE



KEYPLAN

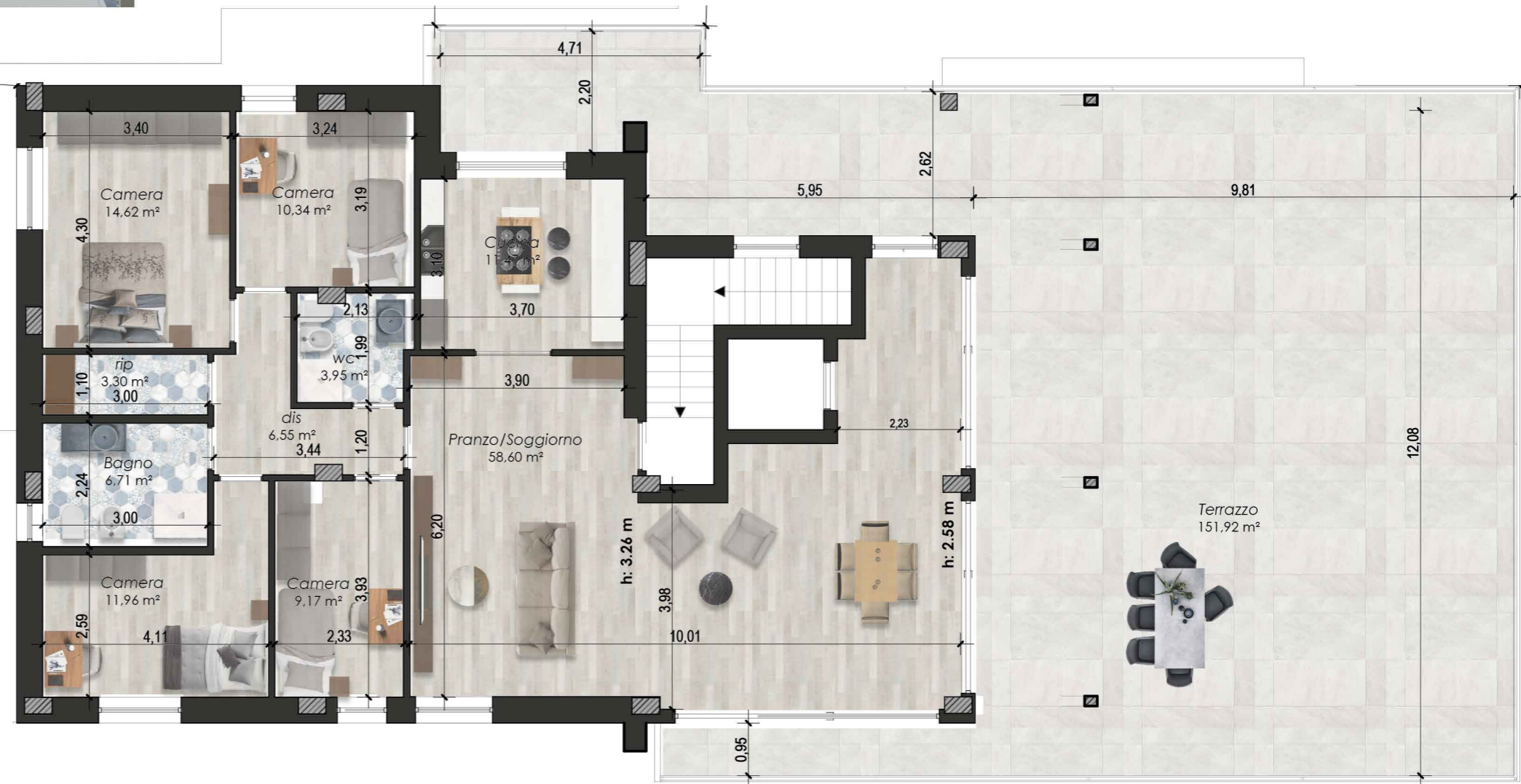


EDIFICIO D

APPARTAMENTO

**D10**

PIANO QUARTO



MQ	PIANO	MQ	%	Sup. Commerciali	
Appartamento 10	Quarto	167,31	100%	167,31	
Terrazzo	Quarto	158,94	50%	79,47	
				<b>Totale</b>	<b>246,78</b>