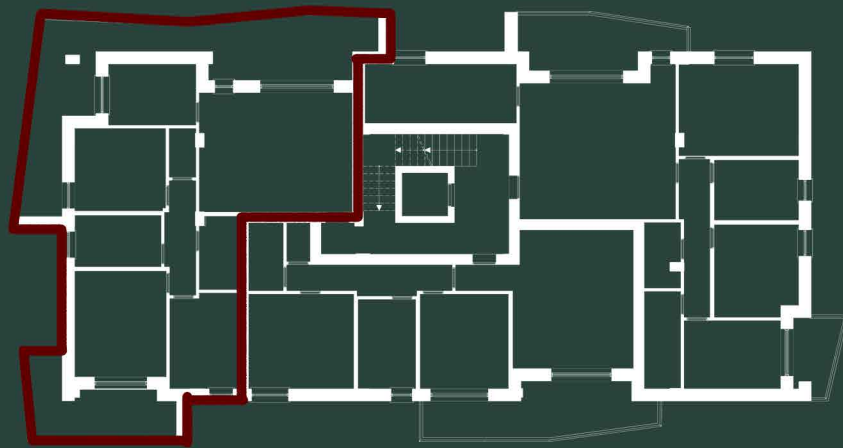
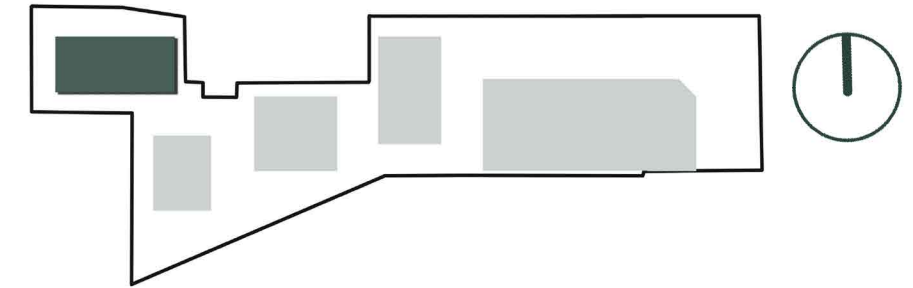


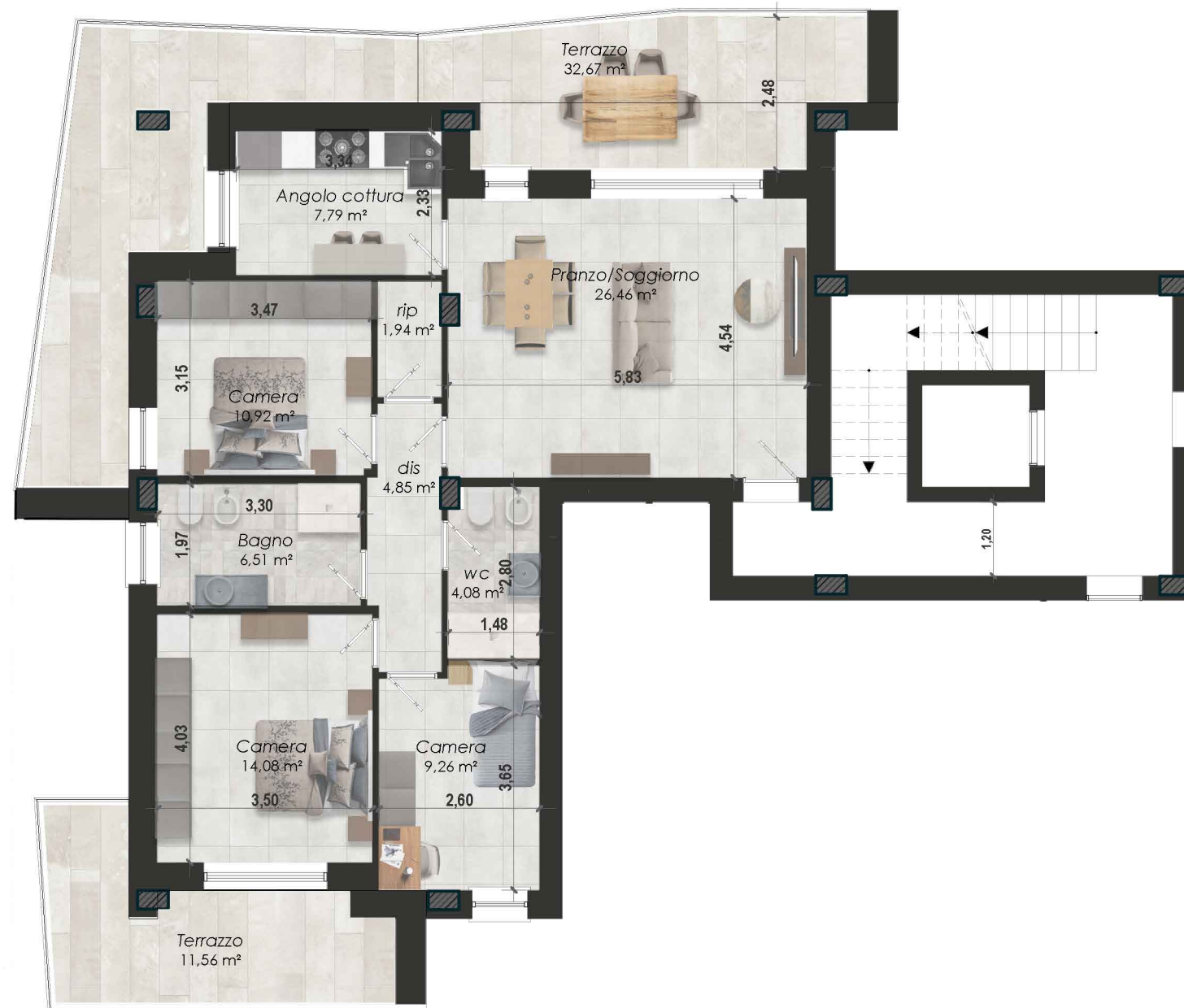
RESIDENZIALE MORANE



KEYPLAN



EDIFICIO D APPARTAMENTO D01 PIANO PRIMO



Destinazione	PIANO	MQ	%	Sup. Commerciali
Appartamento 01	Primo	108,87	100%	108,87
Balcone	Primo	36,69	50%	18,35
Balcone	Primo	13,65	50%	6,83
Totale				134,04